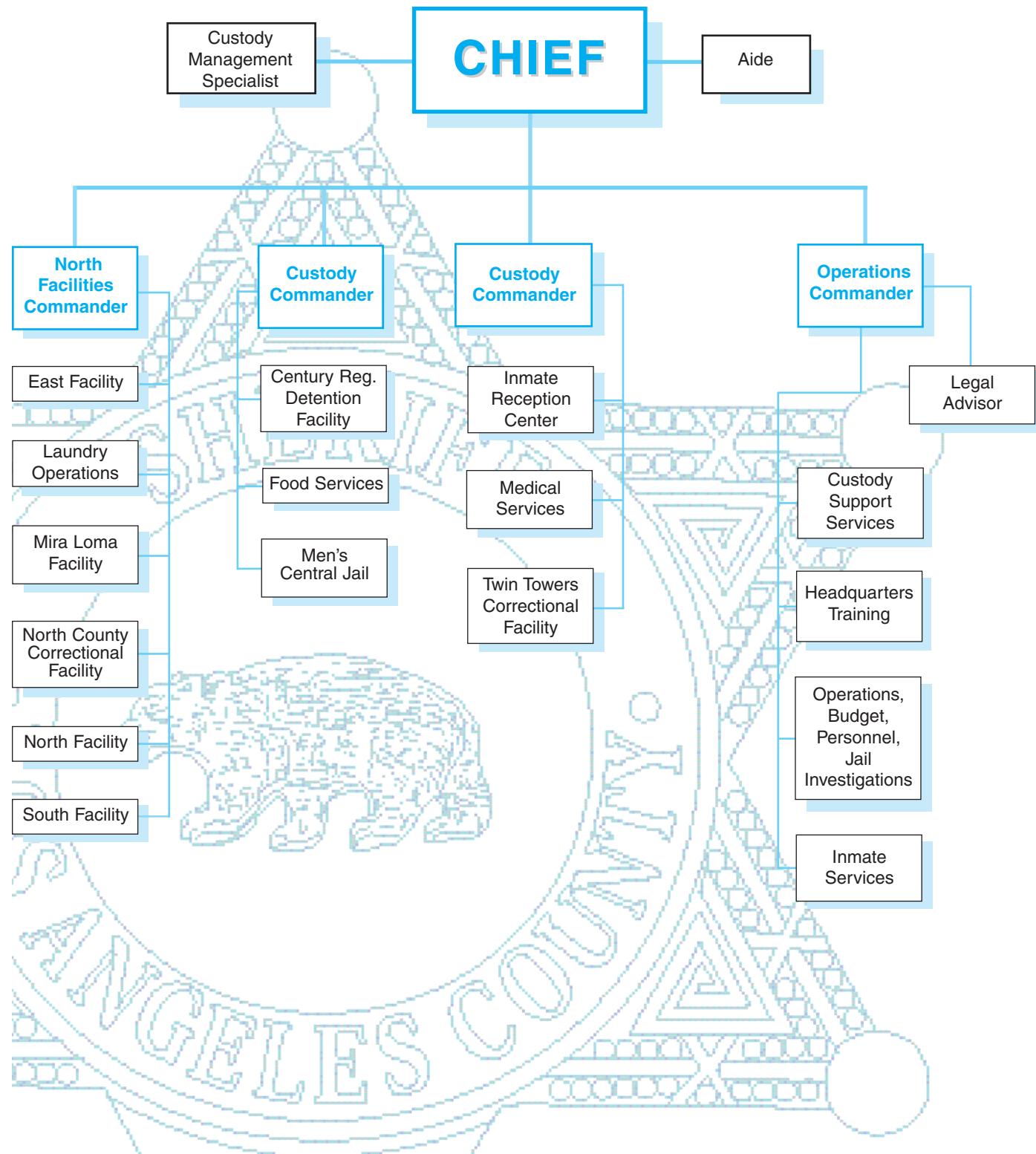


CUSTODY DIVISION



Y E A R I N R E V I E W • 1 9 9 8

CUSTODY DIVISION



CUSTODY DIVISION

The Custody Division was reorganized; consolidating North and South Divisions into one in 1995, this configuration continued in 1998.

CENTURY REGIONAL DETENTION FACILITY

The Century Regional Detention Facility (CRDF) is part of the Lynwood Regional Justice Center (LRJC). Included in the LRJC with CRDF are the Lynwood Municipal Court and the Century Station. A person arrested by Century Station would be booked at CRDF, arraigned at the Lynwood Municipal Court, returned to CRDF for permanent housing, then walked to the Lynwood Municipal Court for the preliminary hearing. CRDF is a court-specific jail for Compton Superior Court and Long Beach Superior Court. This configuration results in less travel time and less inconvenience for both the court and the inmate.

The Century Regional Detention Facility is primarily a direct supervision jail. Direct supervision is an inmate management tool that is based on the principles of basic personnel supervision. It uses a "reward and minor discipline" approach to obtain acceptable inmate behavior.

Direct supervision is a program-driven system. The programs offered to the inmates provide a chance to obtain a full high school diploma, obtain GED completion, participate in personal relations classes, and attend parenting classes. Participation in these programs is voluntary. The Municipal and Superior Court Drug Court participants are housed at CRDF. The facility provides the Drug Court program with a unique atmos-



*Captain Dennis A. Conte
Century Regional Detention
Facility*

phere which maximizes the opportunity for counseling. All these opportunities make CRDF one of the safest jails in the Sheriff's jail system.

CUSTODY SUPPORT SERVICES DIVISION

Custody Support Services Division is a highlighted unit for Custody Division. (see page 108)

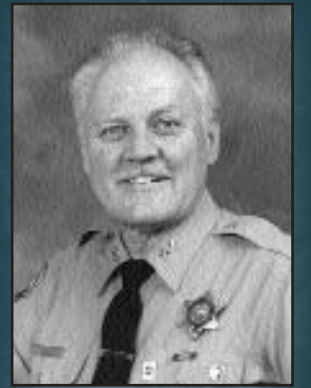
INMATE RECEPTION CENTER

Improved Mental Health and Medical Screening Process

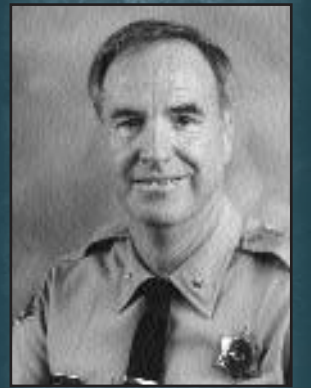
In concert with Sheriff's Medical Services and Twin Towers Facility, an alternative method of conducting medical and mental health screening for female bookings was developed and implemented. This new method of processing allows for the simultaneous and rapid medical and mental health screening of female inmates by utilizing existing medical service areas during non-peak hours. The implementation of this new process provided us with the ability to process both male and female inmates at virtually the same time. This enhanced ability has assisted greatly in reducing the substantial processing delays that formerly occurred while conducting female bookings.

Staffing of Custody Personnel to Assist Mental Health and Medical Personnel

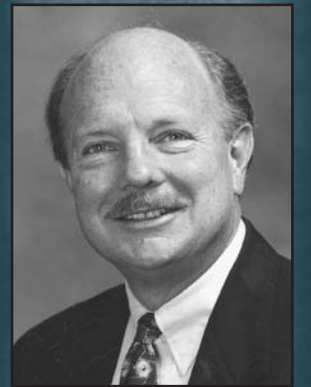
In support of the joint mission to deliver quality care to inmates, shared by the Sheriff's Department and the County Department of Mental Health, Custody personnel have been assigned specific duties to help both medical and mental health professionals. Custody personnel have been assigned, 24 hours a day, as medical liaison officers, and given the responsibility of providing direct support to medical and mental health clinicians. They are also tasked with keeping track of inmates requiring care, and notifying care providers of



*Chief Robert R. Pash
Custody Division*



*Commander Jerry H. Skaggs
Administration*



Commander Daniel L. Burt



Commander Steven A. Day

acute situations requiring immediate intervention. The assignment of these personnel has assisted greatly in the delivery of services to inmate patients. The individual efforts of these employees have had the positive effect of fostering an increased level of cooperation among all disciplines.

Records Unit

The Records Unit at the Inmate Reception Center is responsible for maintaining records for every inmate housed in the Los Angeles County jail system. The maintenance of these records is the backbone of the Records Unit.

Clerks assigned to the Records Unit are responsible for receiving, booking, and releasing all inmates processed into or out of the Los Angeles County jail. They are further responsible for ensuring that inmates are sent to the proper courts, and that any orders made by the courts are carried out. These clerks, during any given month, process from 44,000 to 200,100 documents.

In any "paper driven" system, errors will occur. During 1998, it was the goal of the Records Unit to reduce the number of over-detentions caused by such errors. Past attempts to lower the over-detention totals led to increases in the number of erroneous releases. However, in 1998, the Records Unit managed to effect a 30% reduction in the number of over detentions, while still maintaining the record low of only 11 erroneous releases.

In 1998, a pilot project approved by the County Board of Supervisors was initiated. The goal of this project was to electronically link the Los Angeles County Sheriff Department's Automated Jail Information System (AJIS) with the Los Angeles County Trial Court Information System (TCIS). Once linked, updates by court personnel made into TCIS would simultaneously update the

AJIS system. It is expected that when this system is fully implemented, over detentions and erroneous releases will be dramatically reduced. By December 1998, the pilot project had expanded to include two courts.

Clothing and Property

The property and evidence custodians assigned to the Inmate Reception Center are responsible for the storage and handling of the personal property and clothing of every inmate held in the Los Angeles County jail system. The average daily inmate count for Custody in 1998 was 21,303. To address the issue of lost/missing clothing and property, a database was developed which allows for the logging of property claims as well as unclaimed property. This relational database allows for the matching of property and claims, resulting in a significant impact on the number of unresolved claims.

Mail Room

The mail room at the Inmate Reception Center is responsible for handling all mail addressed to inmates housed within the County jail system. During 1998, a project was initiated to have the Pitchess Detention Center (PDC) mail room personnel inspect and distribute all mail for inmates housed at the north facilities. As a result, nearly 40% of the inmate mail processing workload has been reduced at the Inmate Reception Center site. This PDC operation has improved the overall operation of the mail distribution at PDC and reduced the mail's processing time by nearly two days.

Classification/CBAC Unit

Nineteen ninety-eight was an extremely successful year for the Classification/CBAC (Community-Based Alternatives to Custody) Unit. This unit was highly involved in the management of the Custody Division inmate count, enhancing the screening and inmate compliance for all CBAC Programs.

Count management and CBAC

While the average inmate stay in custody increased to 44 days, the marriage between the Probation and Sheriff Departments has become increasingly important. Communication was facilitated by not only conducting routine meetings of managers and supervisors, but by housing Probation staff and supervisors at IRC, where the coordination of inmate screening could be accomplished in a collaborative manner.

In January 1998, Sheriff Sherman Block ordered that all inmates were to do 100% of their sentence in custody or on a CBAC program. IRC enhanced the screening process in concert with the Probation Department, for various CBAC Programs. CBAC is an umbrella for the Electronic Monitoring Program, Work Release Program, Home Confinement Program, Amer-I-Can Program, Scapular House (work furlough referrals), and the Weekender Program. At the time of the order, CBAC screening was conducted after an inmate had completed 35% of his/her sentence in traditional custody.

IRC and Probation management were concerned about "blind siding" the Judicial System. Through presentations at judicial meetings, seminars, and to court staffs, coupled with a presentation to the Offender Management Authority, the CBAC staff has involved the Judicial System with the inmate count management and CBAC decision-making. Thus, some defendants are placed on the Pre-Trial Supervision Program and Electronic Monitoring Program directly out of court and never get remanded to custody.

The IRC Noncompliance Crew decreased the quantity of noncompliant CBAC inmates. The unit works proactively to address problem inmates before they abscond, and immediately returns noncompliant inmates to custody upon notification. This unit also conducts detailed investigations to locate absconds using technology on the Internet.

IRC coordinated the implementation of a new MOU between the Immigration and Naturalization Service and our Department on July 15, 1998. Federal agents now interview foreign-born inmates, in the IRC release area, upon expiration of their sentences, as well as at the time of CBAC screening. Enhancements of the INS process have increased interviews, holds placed, and inmate transfers to Federal Government detention facilities.

Mobile Booking Team

The Department's Mobile Booking Team was activated five times during 1998. They assisted the Department with: the Rose Parade, a detective sting operation in Lancaster, both a car rally and a cruising event in Pico Rivera, and the Huntington Park disturbances that resulted after the world soccer event.

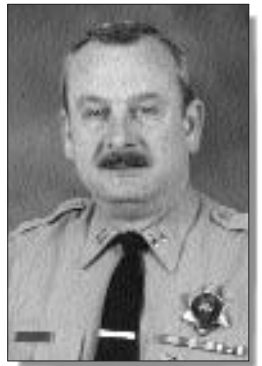
Mobile Booking Team operations and the Pitchess Detention Center contract with the Department of Corrections.

PDC Contract

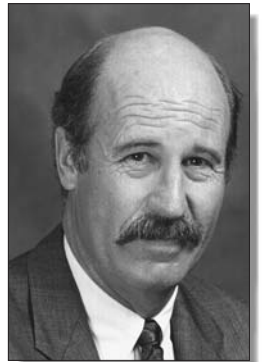
IRC, working with Fiscal Administration, Data Systems Bureau and Medical Services, worked diligently in 1998 to enhance and take advantage of a 1997 renewed multi-million dollar contract between the Department of Corrections and our Department. The contract involved providing housing for parole violators at Pitchess Detention Center. Restructured procedures were enacted to identify and medically screen the 1,400 inmates for the contract, while maintaining documentation for State auditors.

Inmate Services

The Inmate Services Unit is assigned to Custody Division Headquarters. The unit is not only responsible for managing the Inmate Welfare Fund, but also coordinates the Correctional Education program, Religious and Volunteer Services, Commissary Operations, Inmate Telephone Services, and Inmate Vending.



Captain Charles M. Jackson
Inmate Reception Center



Captain William G. Christiansen
Men's Central Jail



Captain Errol J. Van Horne
Mira Loma Facility

MIRA LOMA FACILITY

On February 23, 1997, the Mira Loma Detention Center opened under Federal contract with the Immigration and Naturalization Service, in order to house medium security federal detainees awaiting deportation hearings. The Facility, closed since 1993, had previously housed County female prisoners. The Facility has been upgraded to accommodate 600 male detainees, representing 60 countries, worldwide.

Federal Executive Office of Immigration Review (EOIR) courtrooms are on site, which allows deportation hearings to be conducted without removing the detainees from the Facility.

In 1998, the Mira Loma Detention Center became the largest Immigration and Naturalization Service Detention Center in the country. There are plans in the near future to add more courtrooms and housing areas for additional detainees.

Inmates who qualify to participate in the program enter into a daily routine of getting up each morning and going to work. For many of them, this is a first-time experience. They become gainfully employed and discover the rewards associated with being individually productive. Inmates enjoy interacting with staff and instructors in an atmosphere of respect and dignity. They are regarded as regular employees, and are treated as such. For the first time, they have a realistic expectation of returning to society with the necessary skills to succeed. Most inmates report that the program keeps their minds focused on constructive activities, thereby reducing the anxiety of incarceration. Jail administrators have found that inmates are less likely to engage in violent behavior when their idle time is reduced.

The North County Correctional Facility Vocational Programs are an enormously beneficial and collaborative enterprise between the inmates, the Hacienda La Puente School District and the Los Angeles County Sheriff's Department.

PITCHESS DETENTION CENTER EAST FACILITY

As the oldest operating facility in Custody Division, Pitchess Detention Center - East Facility evolved from a solely "disciplinary housing" unit in 1951, into the original "maximum security" inmate housing unit in the North County in 1957.

Originally designed as a satellite of the Minimum Facility to house approximately 100 disciplinary inmates, the facility grew to also house nearly 800 high-security general population inmates, thus earning its own identity as Maximum Facility. The current working inmate capacity for East Facility is 1,830.

As the inmate population has increased over time, so has the diversity of that population. East Facility has become one of the primary units responsible for housing State Parole

Violators awaiting Morrissey Hearings. Under contract with the State of California, the Department has designated East Facility as one of the primary facilities "holding" the inmates prior to their hearings. Depending on the outcome of those hearings, some of those inmates may also serve out their parole violation time at East Facility.

Achieving the title "oldest working custody facility" has not been without its adversities. Over time, the entire air circulation system needed to be replaced. Asbestos was removed, and all inmate housing areas were refurbished. Currently, the entire facility is being re-plumbed. Some of the pending upgrades to East Facility are; a new inmate processing area, additional and improved security fencing around the facility perimeter, an improved inmate recreation yard and a high security facility control booth. Once these funded upgrades are completed, East Facility will continue its Tradition of Service to the Department, public and inmates.

PITCHESS DETENTION CENTER NORTH FACILITY

North Facility is a maximum security complex, with a total capacity of 1,600 inmates, on a seven-acre site directly north of the South Facility on the Pitchess Detention Center (PDC).

The complex has received numerous modifications since its opening, including modifying the administration building to accommodate command staff. In September 1998, a closed circuit TV system was installed in the dormitories and other areas of the modules to monitor inmate activity. These cameras can be monitored in the module dormitory control offices and module control offices. Main control personnel have the ability to monitor and/or video tape each area covered by the system.

The facility physical plant now consists of the following:

- Administration building
- Two modular trailers housing administrative offices and male and female locker rooms
- Four modules housing 400 inmates each
- Kitchen (closed)
- Processing building
- Officers' dining room/conference room

The inmates are housed in individual dormitories, within one of four modules. Each module contains the following:

- Four dormitories - 96 inmates each
- Eight disciplinary cells - two inmates each
- One multipurpose room - used for various services
- One officer-staffed main control booth
- Medical center
- Inmate visiting center

All services are brought to the inmates in the module; including meals, stores, inmate services, school programs and medical services. As a result, inmate movement is kept to a minimum, which results in a more secure environment.

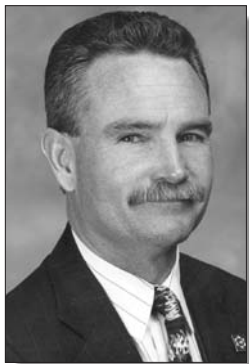
PITCHESS DETENTION CENTER SOUTH FACILITY

The Los Angeles County Sheriff's Department's South Facility is a medium security jail located at the Peter J. Pitchess Detention Center in Castaic, California. It is unique among the Los Angeles County Jail facilities in its operation and layout, as it is the only remaining open compound County jail facility.

South Facility consists of 22 barracks surrounded by security fencing. Its population consists of minimum and medium-security, sentenced, pre-sentenced, and California Department of Corrections (State) inmates. It is staffed with approximately 200 sworn and civilian Department members, volunteer chaplains and instructors from the La Puente-Hacienda Heights Unified School District.



Captain Richard L. Castro
Facilities
Pitchess Detention Center-North



Captain David R. Betkey
North County Correctional Facility

NORTH COUNTY CORRECTIONAL FACILITY VOCATIONAL INDUSTRIES

The Vocational Industries Program at the North County Correctional Facility comprises three distinctive shops, occupying an area of 72,000 square feet. The program includes training and production in offset printing, power sewing, and computer sign manufacturing.

The program is designed to serve the needs of the Los Angeles County Sheriff's Department and other County agencies. The products generated by these industries amount to an annual cost savings of more than two million dollars for the taxpayers of Los Angeles County. However, the greatest benefit of the program is the opportunity for individual achievement. Employing nearly 250 inmates, our shops teach vocational trade skills while reducing idle time in an environment that promotes high self-esteem.



Captain Michael E. Soderberg
Pitchess Detention Center-South

South Facility offers the inmates vocational programs in construction trades such as carpentry, masonry and welding, as well as in dog grooming. The inmates are also afforded instructional and counseling programs, including those programs dealing with drug abuse and parenting skills. Some of South Facility's inmates work as fire suppression crews with the County Fire Department's Fire Suppression Training Camp #12. They are on-call 24 hours a day, and are actively receiving fire service training when not actually fighting fires.

The South Facility is also responsible for motor pool operations. The motor pool, which provides transportation for Sheriff's Department personnel and supply materials, utilizes commercial trucks, heavy equipment and automobiles.

South Facility is additionally charged with the security and maintenance of the entire 2,800 rural acres which encompass four individual jail facilities and two weapons training facilities.

The administrators and staff of the South Facility are extremely proud of their success in fulfilling the mission to provide a secure, safe and constitutionally managed jail environment for inmates, staff and the surrounding community.

TWIN TOWERS CORRECTIONAL FACILITY

The Twin Towers Correctional Facility (TTCF) is a maximum security complex with a rated capacity of 4,192 inmates. The term "complex" truly applies to this facility, since it includes a maximum security jail (in two towers) and a medical services building. Custody Division Headquarters is also located on site.

Since its opening in February, 1997, the one "constant" that TTCF personnel have had to deal with is that things are constantly changing. Tower

I initially opened with male general population inmates. In June, 1997, Sybil Brand Institute for Women closed its doors for renovation, thereby introducing female inmates into Tower II. In January 1998, mentally ill inmates replaced the existing inmate population in Tower I. Most of 1998 brought inmate counts in excess of 5,000. Currently, the inmate population being housed is almost equally divided, with approximately 2,400 females and 2,300 males.

The TTCF houses one of the largest mental treatment hospitals in the world. Patients' needs vary from those requiring psychotropic medication to those requiring extensive care for acute mental illness. The Mental Health Department, in conjunction with TTCF personnel, provide outstanding care to those inmates requiring special services and treatment.

With its opening, the TTCF inherited a substantial portion of the Medical Services function from Men's Central Jail. Medical Services personnel provide a variety of care including the dispensing of medication to just under 3,000 inmates a day.

When Sybil Brand Institute closed its doors, TTCF inherited the LCMC Jail Ward. Located within the LAC+USC Medical Center, the Jail Ward provides a secure, well equipped site for housing inmates undergoing medical treatment. Jail Ward personnel handle the booking, housing, security, transportation and life safety responsibilities for all inmates housed at the facility.

The TTCF staff have continuously demonstrated a "can do" attitude in planning and coordinating the transition of the aforementioned inmate populations, as well as performing their custodial duties in an extremely professional manner.

MEDICAL SERVICES

Medical Services is a highlighted unit for Custody Division. (see page 124)



Captain Robert E. Hoffman Jr.
Twin Towers
Correctional Facility